

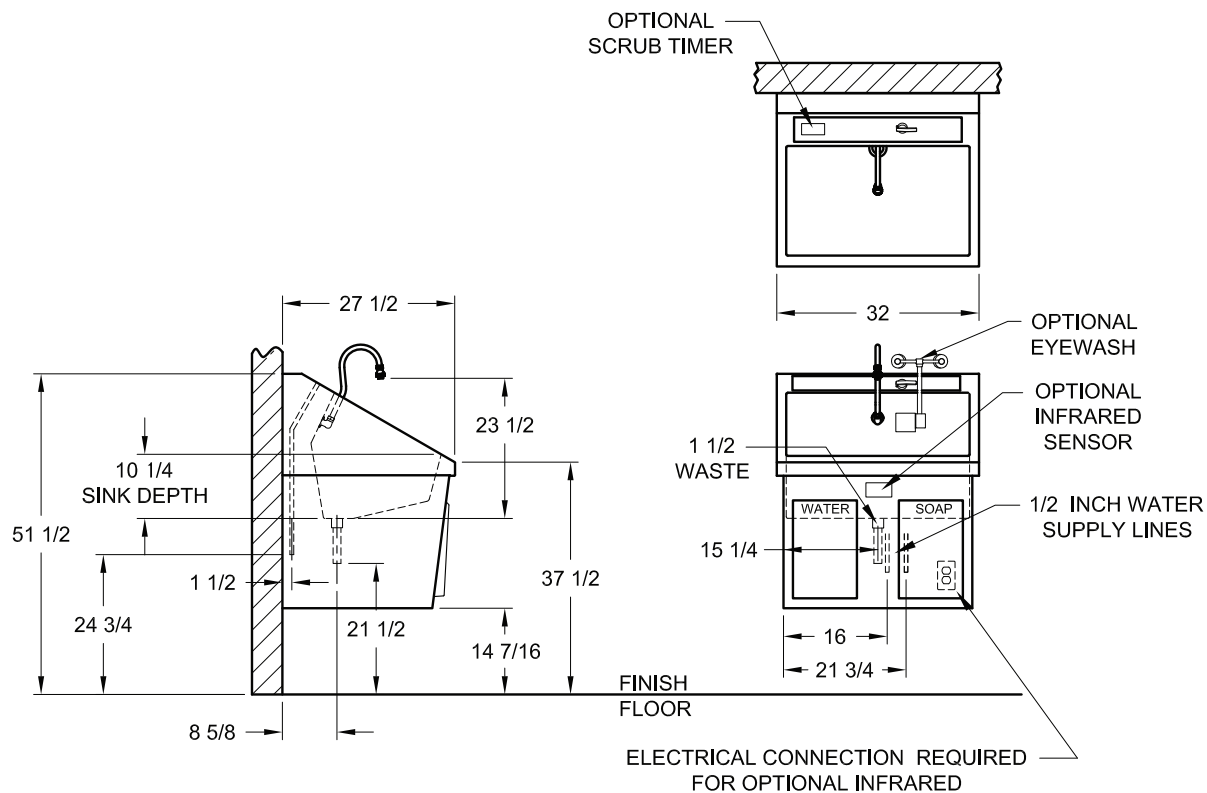
Surgical Scrub Sinks

SS-Series



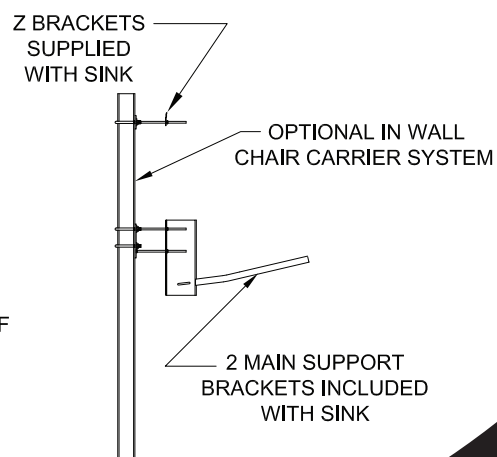
Model # SS32 (Single Station)

DIMENSIONS



NOTES:

1. MATERIAL:
SINK BASIN; 14 GAUGE
304 STAINLESS STEEL
SINK SKIRT; 16 GAUGE
304 STAINLESS STEEL
2. ALL PLUMBING 1/2" COPPER OR BRASS PIPE.
THE SINK WILL BE FURNISHED WITH IN LINE CHECK
VALVES ON SUPPLY LINES.
3. UTILITY REQUIREMENT
COLD WATER 20 TO 50 PSIG 70 DEG F MAX
HOT WATER 20 TO 50 PSIG 120 DEG F TO 140 DEG F
4. POWER REQUIREMENTS (FOR SENSOR OPERATIONS)
120 VAC, 60 Hz, SINGLE PHASE, 3.0 AMP OR
220 VAC, 60 Hz, SINGLE PHASE, 1.5 AMP.
INSTALLED PER LOCAL BUILDING CODES.
5. NET WEIGHT OF SINK 130 LB.



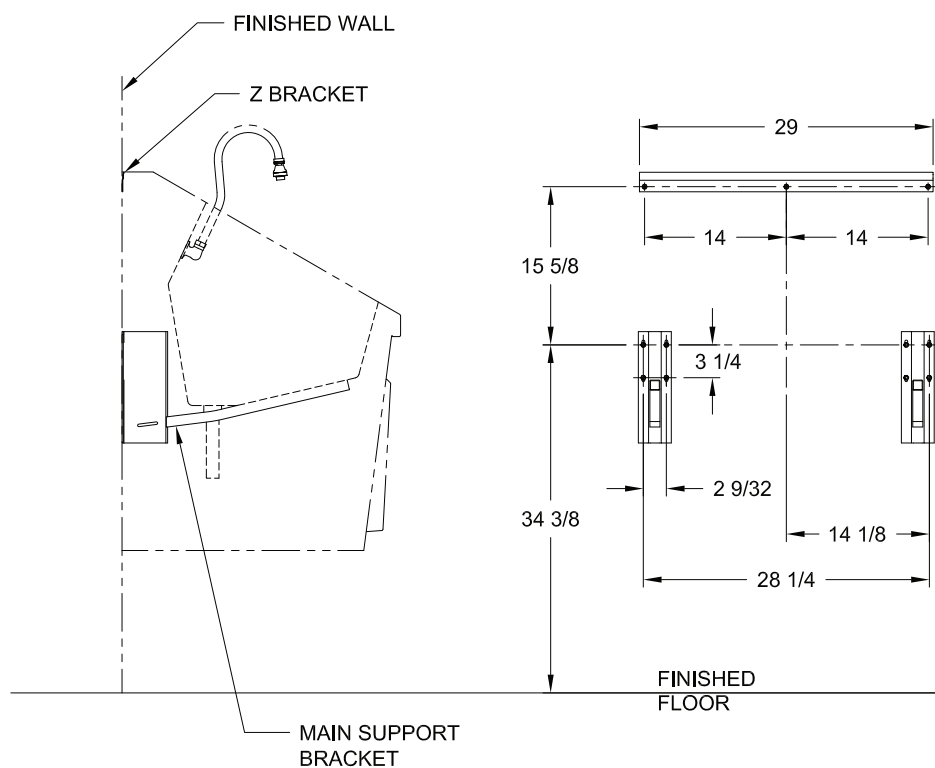
Surgical Scrub Sinks

SS-Series



Model # SS32 (Single Station)
with Wall Mounting Brackets (included)

DIMENSIONS



Surgical Scrub Sinks

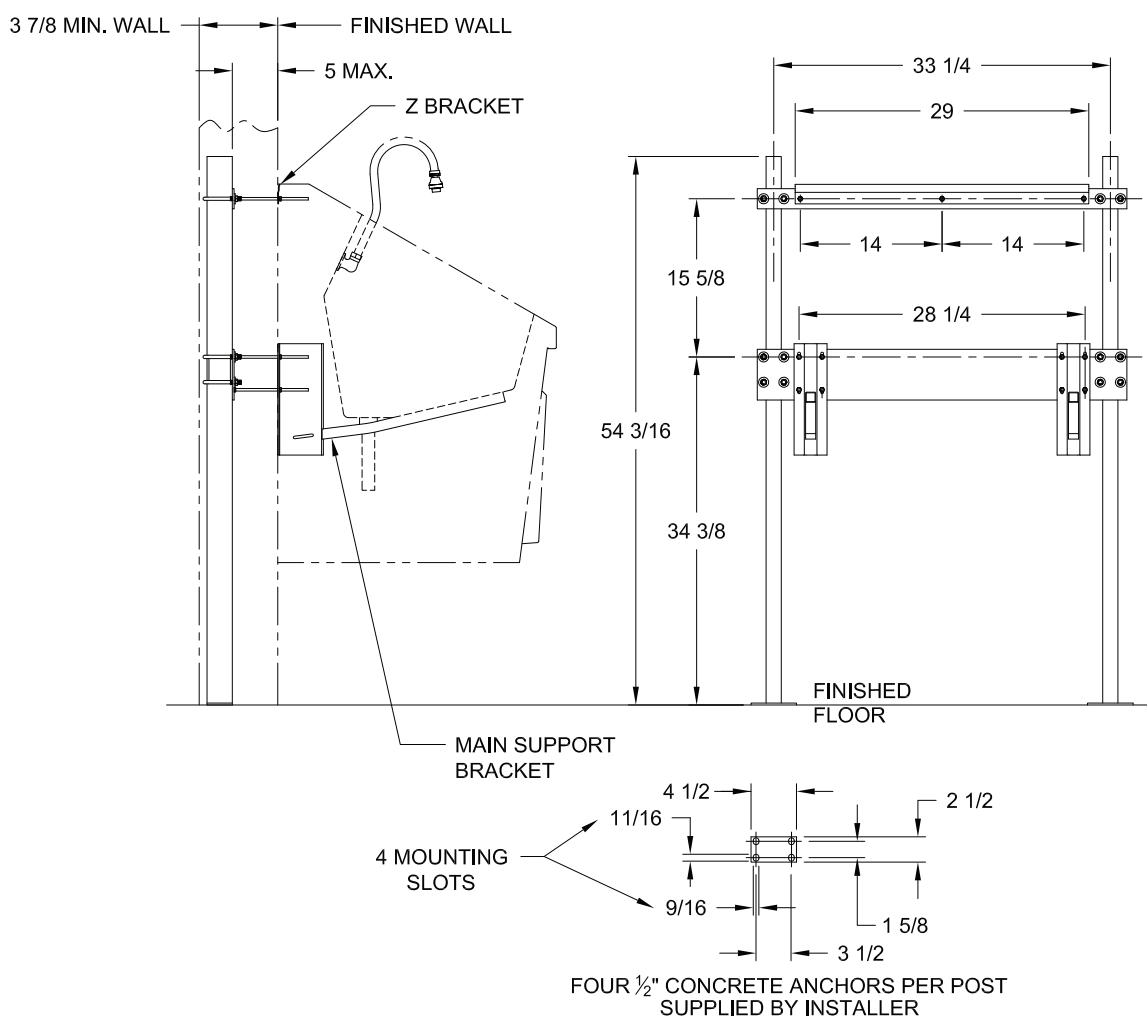
SS-Series



Model # SS32 (Single Station)

with recommended optional In-Wall Chair Carrier System (S0001)

DIMENSIONS



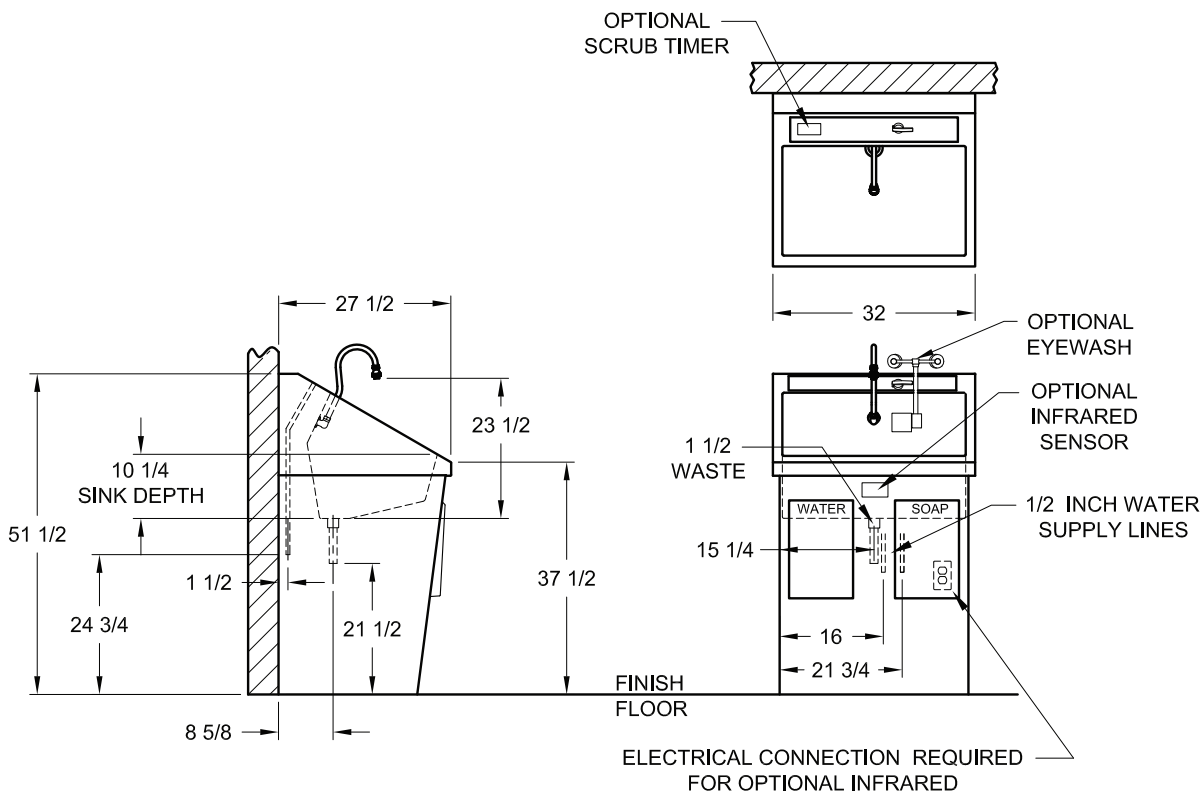
Surgical Scrub Sinks

SS-Series



Model # SS32-PB (Single Station) with Pedestal Base

DIMENSIONS



NOTES:

1. MATERIAL:
 - SINK BASIN; 14 GAUGE
304 STAINLESS STEEL
 - SINK SKIRT; 16 GAUGE
304 STAINLESS STEEL
2. ALL PLUMBING 1/2" COPPER OR BRASS PIPE.
THE SINK WILL BE FURNISHED WITH IN LINE CHECK VALVES ON SUPPLY LINES.
3. UTILITY REQUIREMENT
 - COLD WATER 20 TO 50 PSIG 70 DEG F MAX
 - HOT WATER 20 TO 50 PSIG 120 DEG F TO 140 DEG F
4. POWER REQUIREMENTS (FOR SENSOR OPERATIONS)
 - 120 VAC, 60 Hz, SINGLE PHASE, 3.0 AMP OR
 - 220 VAC, 60 Hz, SINGLE PHASE, 1.5 AMP.
 - INSTALLED PER LOCAL BUILDING CODES.

MAC Medical, Inc.
Publication No. SPEC-SS32
November 2016

Information regarding this product is
subject to change without prior notice.